

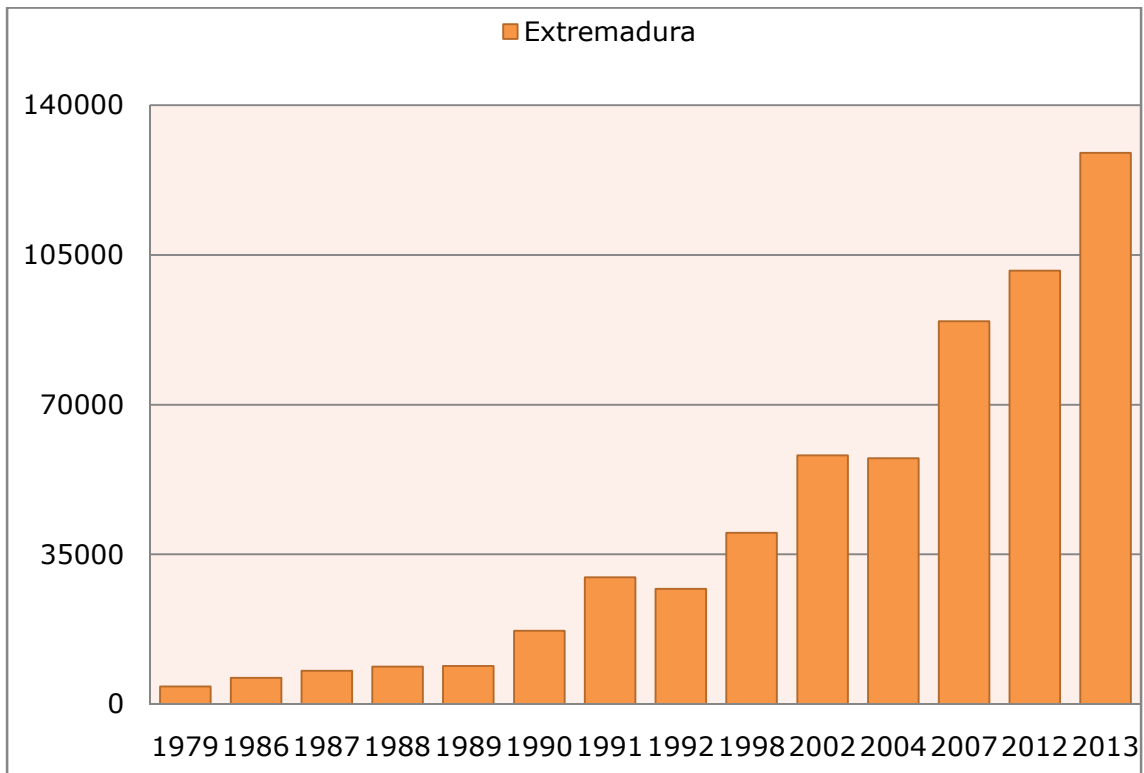
GRUS-EXTREMADURA

Working Group on the Common Crane, Grus grus, in Extremadura

The Common Crane, Grus grus, is a Eurasian species which breeds in northern Europe and Asia and winters in areas to the south.



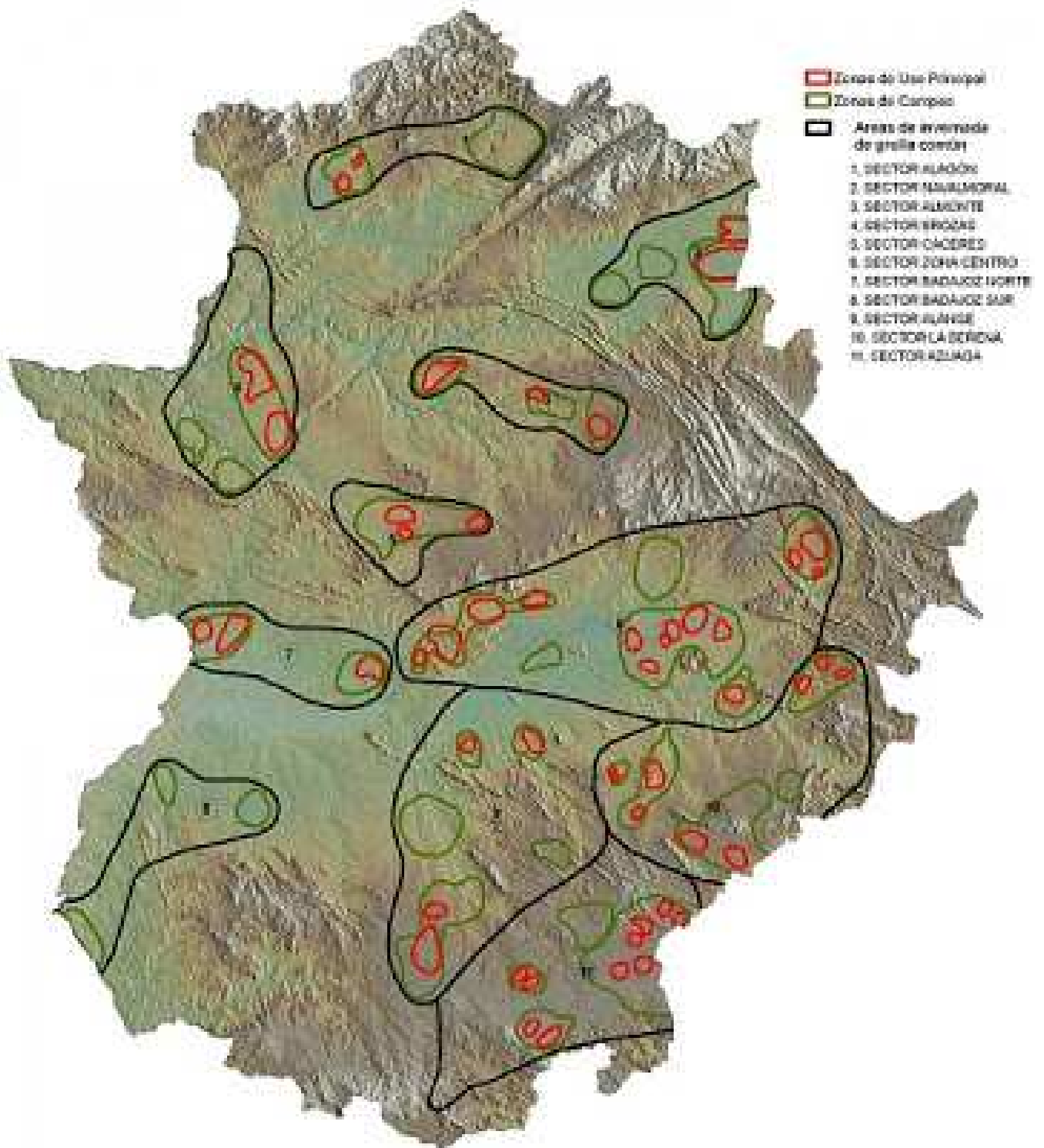
Its western population winters in the countries of south-western Europa, France, Portugal and Spain with some also in North Africa. In Spain the most important wintering area is Extremadura both in terms of the size of the population and the area occupied. Some 130,000 cranes winter there, representing 57% of the total Spanish population. The Central Zone, lying in the upper basin of the Guadiana River, spanning both provinces, hosts 60% of these birds, followed by the 26% in the Tajo basin (C aceres) and 14% in the lower Guadiana in Badajoz.



Growth of the wintering population of Common Crane in Extremadura 1979/2013

<i>LOCATION</i>	<i>Dec-13</i>	<i>Jan-14</i>
<i>S- CAMPO ARAÑUELO</i>	<i>16.639</i>	<i>15.524</i>
<i>S- ALAGÓN</i>	<i>7.649</i>	<i>7.282</i>
<i>S- ALMONTE</i>	<i>2.014</i>	<i>1.995</i>
<i>S- BROZAS</i>	<i>817</i>	<i>1.250</i>
<i>S-TAJO (CÁCERES)</i>	<i>29.415</i>	<i>27.387</i>
<i>S- BADAJOZ NORTH</i>	<i>5.466</i>	<i>3.336</i>
<i>S- BADAJOZ SOUTH</i>	<i>3.860</i>	<i>3.846</i>
<i>S- ALANGE</i>	<i>1.610</i>	<i>571</i>
<i>S- AZUAGA</i>	<i>3.487</i>	<i>2.864</i>
<i>S- VALDECABALLEROS-SIRUELA</i>	<i>554</i>	<i>2.562</i>
<i>S- GUADIANA (BADAJOZ)</i>	<i>16.174</i>	<i>17.073</i>
<i>S-CENTRAL ZONE</i>	<i>83.128</i>	<i>63.465</i>
<i>TOTAL EXTREMADURA</i>	<i>128.821</i>	<i>107.925</i>

Results of the 2013/2014 crane census in Extremadura



Wintering areas of Common Crane *Grus grus* in Extremadura

Traditionally the cranes occupied areas of holm oakwood pasture or stubble fields, where they fed on grain, invertebrates and bulbs, as well as on the acorns of the holm oaks, which represented a very important part of their winter diet.



Changes in farming led to removal of large areas of wood pasture and conversion to crops such as maize and rice, which now form the most important part of the cranes' diet.



With the aim to increase our knowledge of cranes and to promote their protection, a group of crane enthusiasts created the association "Grus Extremadura" with the following objectives:

- To study the wintering cranes in Extremadura with annual censuses
- Gathering information and monitoring on ringed birds



- Detecting problems that may affect the species, promote its conservation and improvement of feeding and resting habitats
- Promote the creation of hunting-free refuges and reserves in areas occupied by cranes
- Carry out environmental education activities to promote awareness of the species and to harness support for crane conservation



Crane Festival in Extremadura.



Cranewatchers. Brozas

- Cooperate with other conservation groups, other autonomous communities and other countries where cranes occur

If you would like to collaborate with us, you can become a member by contacting us on grusextremadura@gmail.com, grus@grusextremadura.org you will be able to participate in the group "Foro Grus Extremadura" through invitation via our email. You can also write to us at Calle Miguel Antolín, 17, 3º A, 06200 Almendralejo, Badajoz.

